

# LUCGE ARC

Collection

[www.divaluce.com](http://www.divaluce.com)

**DIVA LUCE**  
light & form



**DIVA LUCE**  
light & form

**ARCHITECTURAL LIGHTING +**



lighting that  
adapts to you  
and your design



lighting that  
is built around  
your space



storytelling  
through  
lighting design

Seamless connection from  
wall to ceiling.

INTEGRATION:  
LUCE Bridge connecting  
to LUCE Arc.



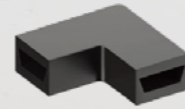


INTEGRATION:  
LUCE Arc connecting  
to LUCE Mac.

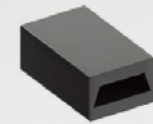


INTEGRATION:  
LUCE Arc connecting  
to LUCE Rail.

INTEGRATION:  
LUCE Arc connecting  
to LUCE Lego.

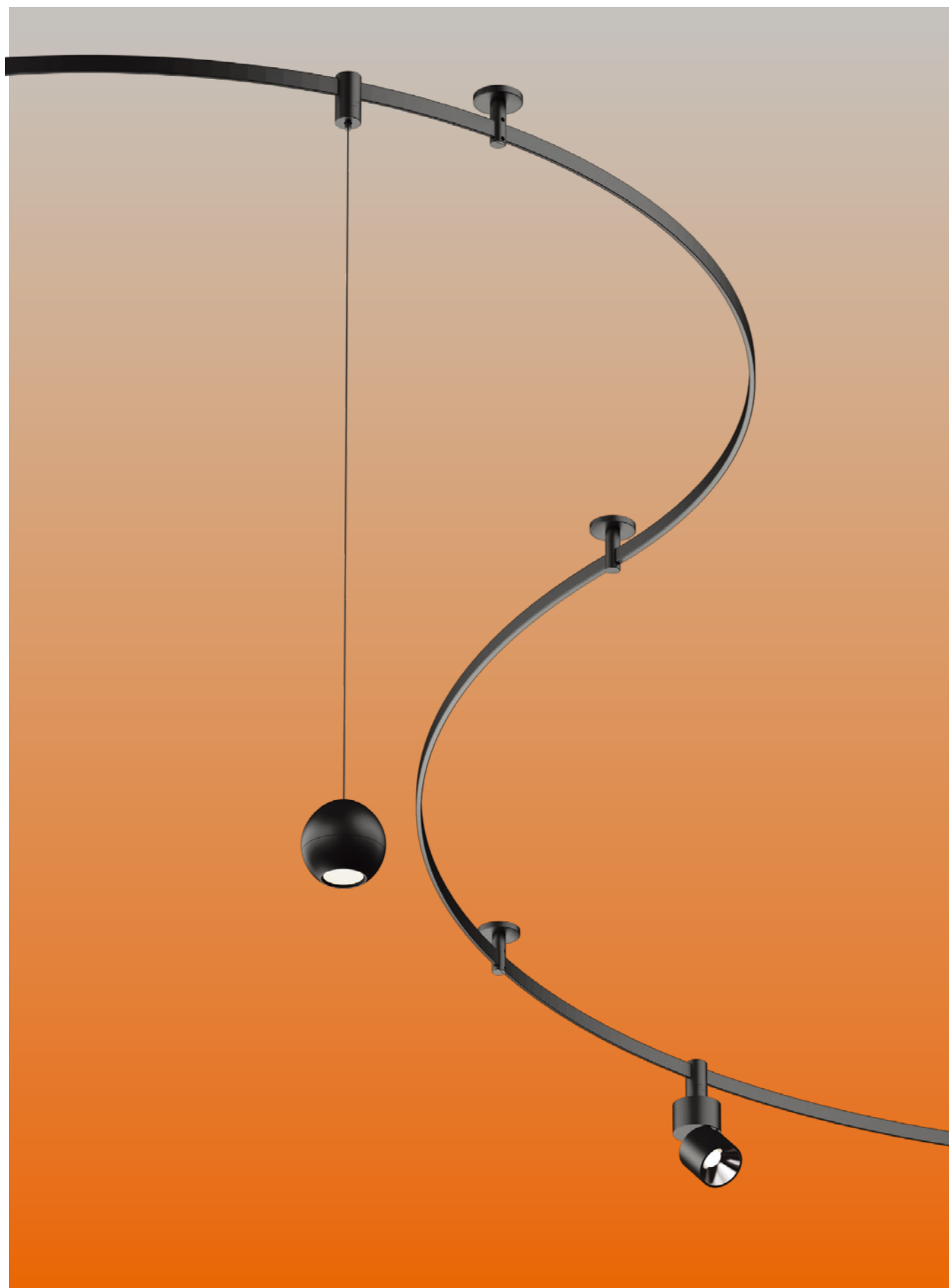


Corner Connector



Straight Connector





The LUCE Arc lighting technology is patented, paving the way for a new, extremely flexible way of lighting.

It's extremely flexible and safe installation, allowing you to install LUCE Arc in any space.



# Office



# Rest Area



# Art Gallery





Example 1

# Product List



1  
LA-003

ARC Track x2



2  
LA-DD2-7W

CONE Pendant Arc x4



3  
LA-G25-250

TUBE Arc x2



4  
LA-SD1-10W

PICO Spot Arc x10



# Product List


	<b>1</b> LA-003	ARC Track	x2
	<b>2</b> LA-G25-250	TUBE Arc	x1
	<b>3</b> LA-CD-07-12W	BALL Pendant Arc	x3
	<b>4</b> LA-BXQD-21-6W	MILA Blade Arc	x1
	<b>5</b> LA-BXQM-12-12W	MILA Diffuser Arc	x2

## Example 2



Example 3

# Product List

	<b>1</b> LA-003	LUCE Arc Track	x1
	<b>2</b> LA-CD-07-12W	BALL Pendant Arc	x4
	<b>3</b> LA-SP-011-12W	LUNA Spot Arc	x6

# LUCE ARC

LUCE Arc is a new, innovative technology, that isn't compatible with just any light. Below you will find all of the lighting fixtures and accessories currently available for the LUCE Arc range, from tube lights to pendant lights and many more options that will allow you to unleash your creativity, and fill your space with unlimited designs.

## LUNA SPOT ARC



<b>Model</b>	LA-SP-011-12W	12W	D50*130mm
	LA-SP-012-18W	18W	D65*156mm
<b>Angle</b>	15°/24°/36°		
<b>CRI</b>	Ra≥90		
<b>CCT</b>	3000K/3500K/4000K/5000K		
<b>Material</b>	Aluminum		

## MILA SPOT ARC



<b>Model</b>	LA-SP-021-7W	7W	D45*100mm
	LA-SP-022-12W	12W	D55*115mm
	LA-SP-023-18W	18W	D65*135mm
<b>Angle</b>	15°/24°/36°		
<b>CRI</b>	Ra≥90		
<b>CCT</b>	3000K/3500K/4000K/5000K		
<b>Material</b>	Aluminum		

## ZOOM SPOT ARC



<b>Model</b>	LA-SP-032-10W	10W	D55*115mm
	LA-SP-033-18W	18W	D65*135mm
<b>Angle</b>	Adjustable 10° - 55°		
<b>CRI</b>	Ra≥90		
<b>CCT</b>	3000K/3500K/4000K/5000K		
<b>Material</b>	Aluminum		

## SNAP SPOT ARC



<b>Model</b>	LA-DW02-R72-12W	12W	D72*108mm
	LA-DW02-R92-18W	18W	D92*130mm
<b>Angle</b>	15°/24°/36°		
<b>CRI</b>	Ra≥90		
<b>CCT</b>	3000K/3500K/4000K/5000K		
<b>Material</b>	Aluminum		

## PICO SPOT ARC



<b>Model</b>	LA-SD1-10W	10W	D67*93MM
<b>Angle</b>	24°		
<b>CRI</b>	Ra≥90		
<b>CCT</b>	3000K/3500K/4000K/5000K		
<b>Material</b>	Aluminum		

### MILA BLADE ARC



Model	LA-BXQD-21-6W	6W	L112*W23*H87mm
	LA-BXQD-22-12W	12W	L220*W23*H87mm
Angle	24°/36°		
CRI	Ra>90		
CCT	3000K/4000K/5000K		
Material	Aluminum		

### MILA DIFFUSER ARC



Model	LA-BXQM-11-6W	6W	L118*W23*H87mm
	LA-BXQM-12-12W	12W	L231*W23*H87mm
Angle	100°		
CRI	Ra>90		
CCT	3000K/4000K/5000K		
Material	Aluminum		

### TUBE ARC



Model	LA-G25-200	18W	D32.3*2000mm
	LA-G25-250	23W	D32.3*2500mm
	LA-G25-500	45W	D32.3*5000mm
Angle	360°		
CRI	Ra>90		
CCT	3000K/4000K/6000K		
Material	Aluminum+Silicone		

### SHUTTLE PENDANT ARC



Model	LA-CD-05-6W	6W	D60*120mm
Angle	24°/36°		
CRI	Ra>90		
CCT	3000K/3500K/4000K/5000K		
Material	Aluminum		

### BALL PENDANT ARC



Model	LA-CD-07-12W	12W	D100*100mm
Angle	Adjustable 10°-55°		
CRI	Ra>90		
CCT	3000K/3500K/4000K/5000K		
Material	Aluminum		

### CONE PENDANT ARC



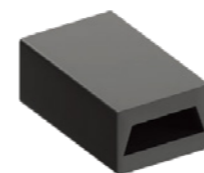
Model	LA-DD2-7W	12W	D195*180mm
Angle	180°		
CRI	Ra>90		
CCT	3000K/3500K/4000K/5000K		
Material	Aluminum+PC		

### ARC TRACK



Model	LA-003	/	23.8*75mm
Angle	/		
CRI	/		
CCT	/		
Material	Silicone		

### LUCE ARC END CAP



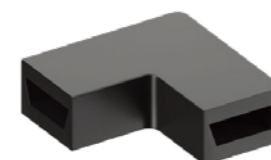
Model	LA-04B	/	50*32*20mm
Angle	/		
CRI	/		
CCT	/		
Material	Plastic Aluminum		

### LUCE ARC SUPPORT



Model	LA-GDJ	/	D60*78mm
Angle	/		
CRI	/		
CCT	/		
Material	Aluminum		

### LUCE ARC 90° BEND



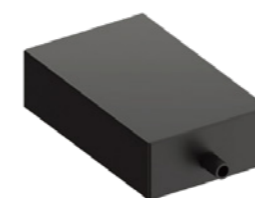
Model	LA-03B	/	61*61*20mm
Angle	/		
CRI	/		
CCT	/		
Material	Plastic		

### LUCE ARC POWER CLAMP



Model	LA-TDT-1m-2X	/	D32.3*65mm
Angle	/		
CRI	/		
CCT	/		
Material	Plastic		

### POWER SUPPLY ARC



Model	LA-SP-021-7W	7W	D45*100mm
	LA-SP-021-12W	12W	D55*115mm
	LA-SP-021-18W	18W	D65*135mm
Angle	15°/24°/36°		
CRI	Ra≥90		
CCT	3000K/3500K/4000K/5000K		
Material			